



Beeches Community Board Meeting

Chairman Cllr David Anthony

Vice Chairman Cllr Nick Naylor

3 October 2023

MS Teams



Agenda

Chairman's Welcome

Apologies for absence

Declarations of Interest

Notes of Last Meeting

Presentation – Monica Bergh – Youth Voluntary Services Co-Ordinator, Buckinghamshire Council

Presentation – The Energy Doctor – Victoria Nash, Better Homes, Better Health – Buckinghamshire Council

Presentation – Making Every Contact Count– Graham White – Buckinghamshire Council

Community Matters:

Petition – Dropmore School traffic calming Petition – Petitioner Danielle Roberts (Community Speedwatch Co-ordinator and Dropmore Infant School Governor) and Neil O'Leary – Network Safety Team Leader – Buckinghamshire Highways

Funding update – Makyla Devlin – Senior Community Board Manager

Buckinghamshire Council Corporate Update – Graham White – Buckinghamshire Council

Public questions received in advance – to be presented by the Chairman

Any Other Business

Date of the next meeting – 4 February via MS Teams – 1800 hrs



Youth

Monica Bergh – Youth Voluntary Services Co-Ordinator
Buckinghamshire Council





The Energy Doctor

Vicki Nash – Better Homes, Better Health
Buckinghamshire Council



Buckinghamshire
Council Domestic
Resource Efficiency
Service



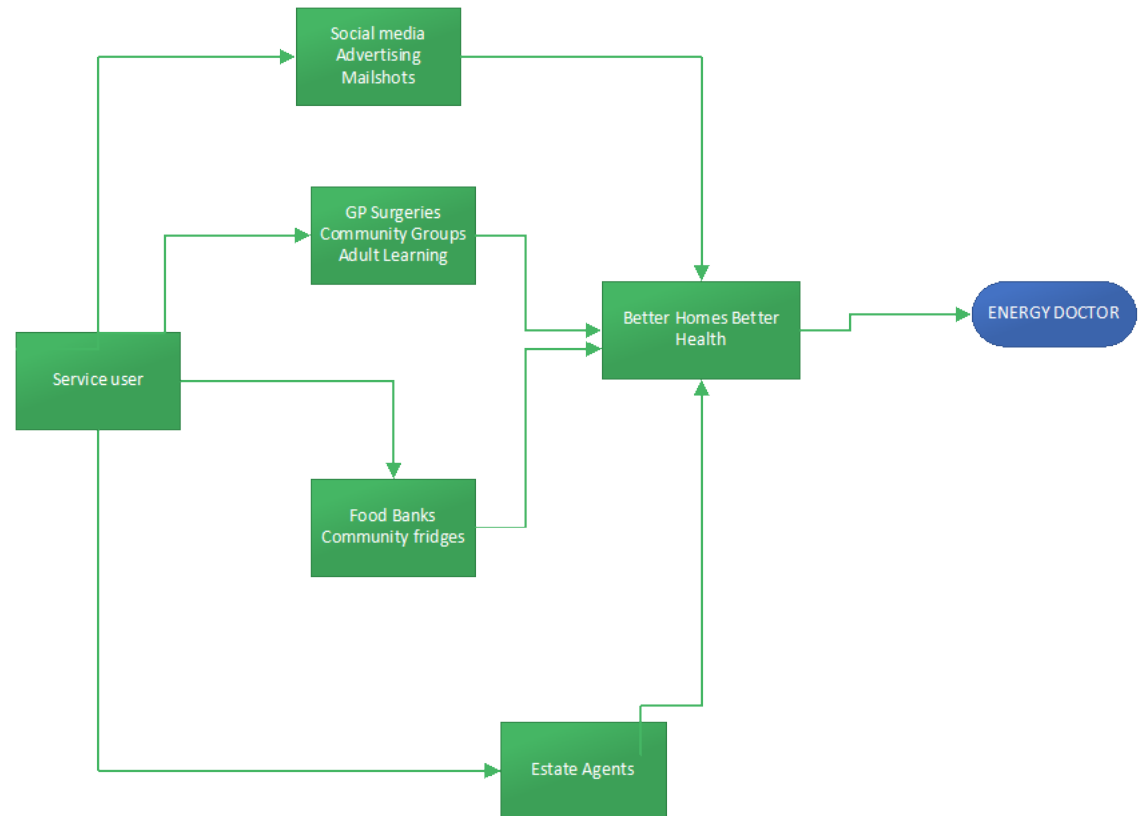
UK SHARED PROSPERITY FUND

A new 'Energy Doctor' scheme (Domestic Resource Efficiency Service) was approved by [Cabinet on 5th January](#) £1,957,841 has been allocated to support the scheme until the end of March 2025 from the Council's allocation of the Government's UK Shared Prosperity Fund (UKSPF).

- It is forecast that 230 household visits can be conducted by March 2023. This number of visits is forecast to achieve the following annual savings for residents:
 - Around 214,000 KWHs of energy consumption saved
 - 45 tonnes CO2 saved
 - Fuel cost savings (across the 230 households) of £34,000 (average saving of £148 per household per year)

- **The qualifying criteria for an Energy Doctor visit are:**
 - household income £30,000 or less (before any deductions); OR the household is in receipt of means tested benefits; OR a member of the household is disabled
 - AND
 - the domestic property has an energy performance certificate rating of D, E, F, or G
 - AND
 - you are an owner occupier or you rent the property via a private rental agreement
- Visits will prioritised for those who meet these eligibility criteria and live in [Opportunity Bucks](#) areas.

Referral process





LCERRE Measures

reflective radiator panels

LED lightbulbs

door, window, and chimney draught proofing

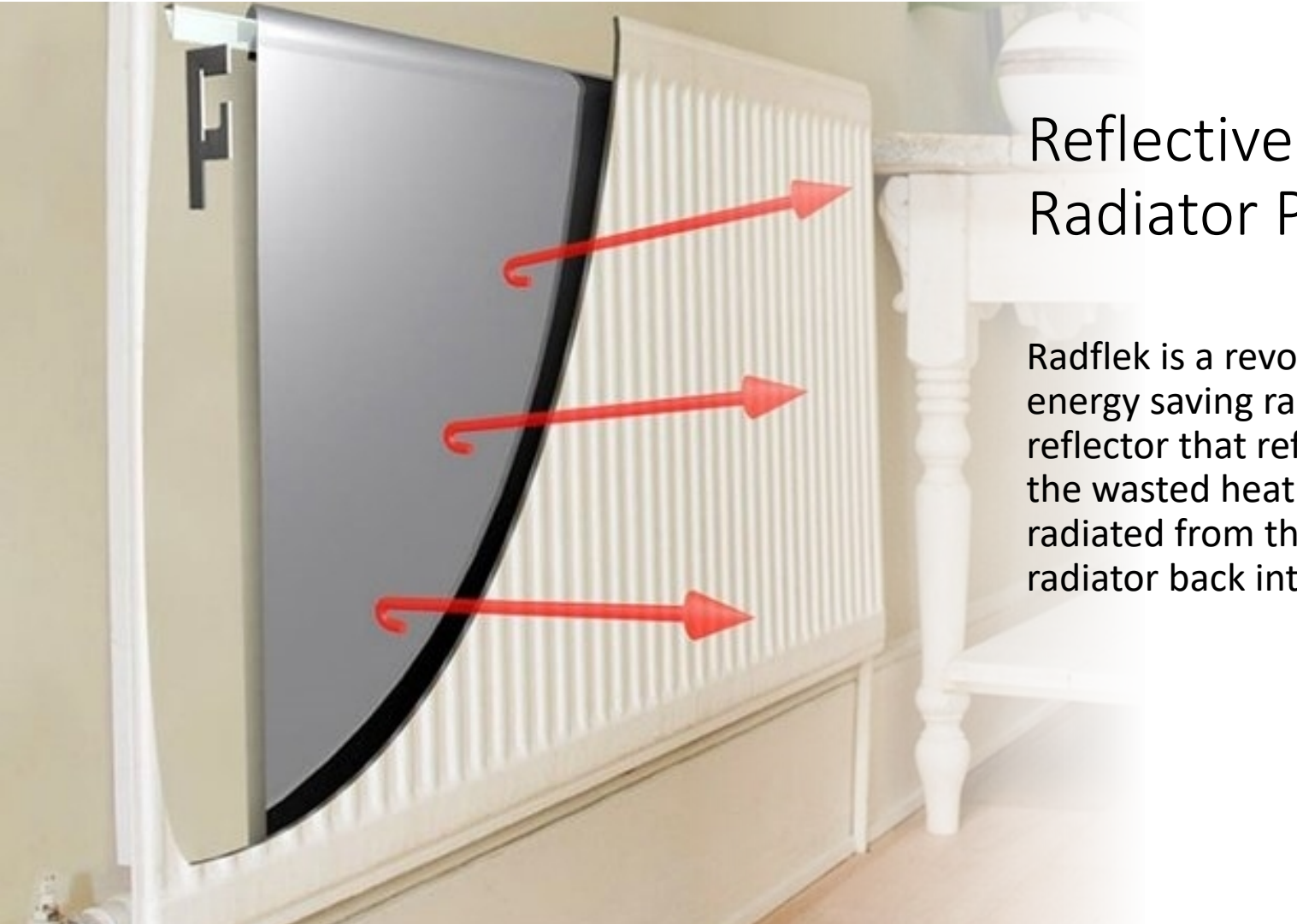
secondary glazing film

hot water cylinder insulation jackets

solar generators

electricity consumption monitors

Heated blankets



Reflective Radiator Panels

Radflek is a revolutionary energy saving radiator reflector that reflects 95% of the wasted heat energy radiated from the rear of a radiator back into your room

Heated Throws



Cylinder jackets

Electricity consumption monitors



LED Lightbulbs





Draft proofing
measures





Solar Generator



Providing advice to encourage behavioural change

Turning down the thermostat by 1°C can reduce your heating costs by up to 8%

You can save around 5-10% on your gas bill if you turn the 'pre-heat' off on your combi boiler

You can save around £55 (45kgCO₂e) a year just by remembering to turn your appliances off standby mode.

Reducing shower time by 1 minute
Could save £45 on metered water supply
Up to £52 on energy costs

Turning appliances off at the socket could save you up to £70 a year

Washing clothes at a lower temperature could save you up to £40 a year

Using your tumble dryer less could save you £70 a year

Closing all your curtains and blinds at night

HOW TO MAKE A REFERRAL

Please contact Better Housing Better Health in the first instance who can assess eligibility for an Energy Doctor visit and other services.

Better Housing Better Health

Tel: 0800 107 0044

Website: [Make a Referral - Better Housing Better Health \(bhbh.org.uk\)](https://www.bhbh.org.uk)

If the customer has no working heating and you have concerns for their health, please email the Domestic Resource Efficiency Service directly: energydoctor@buckinghamshire.gov.uk (Please note the service is available from Monday to Friday, 9am – 5pm excluding bank holidays.)

Do you want to cut your energy bills?

Our friendly energy doctors are here to help!



Buckinghamshire
Council



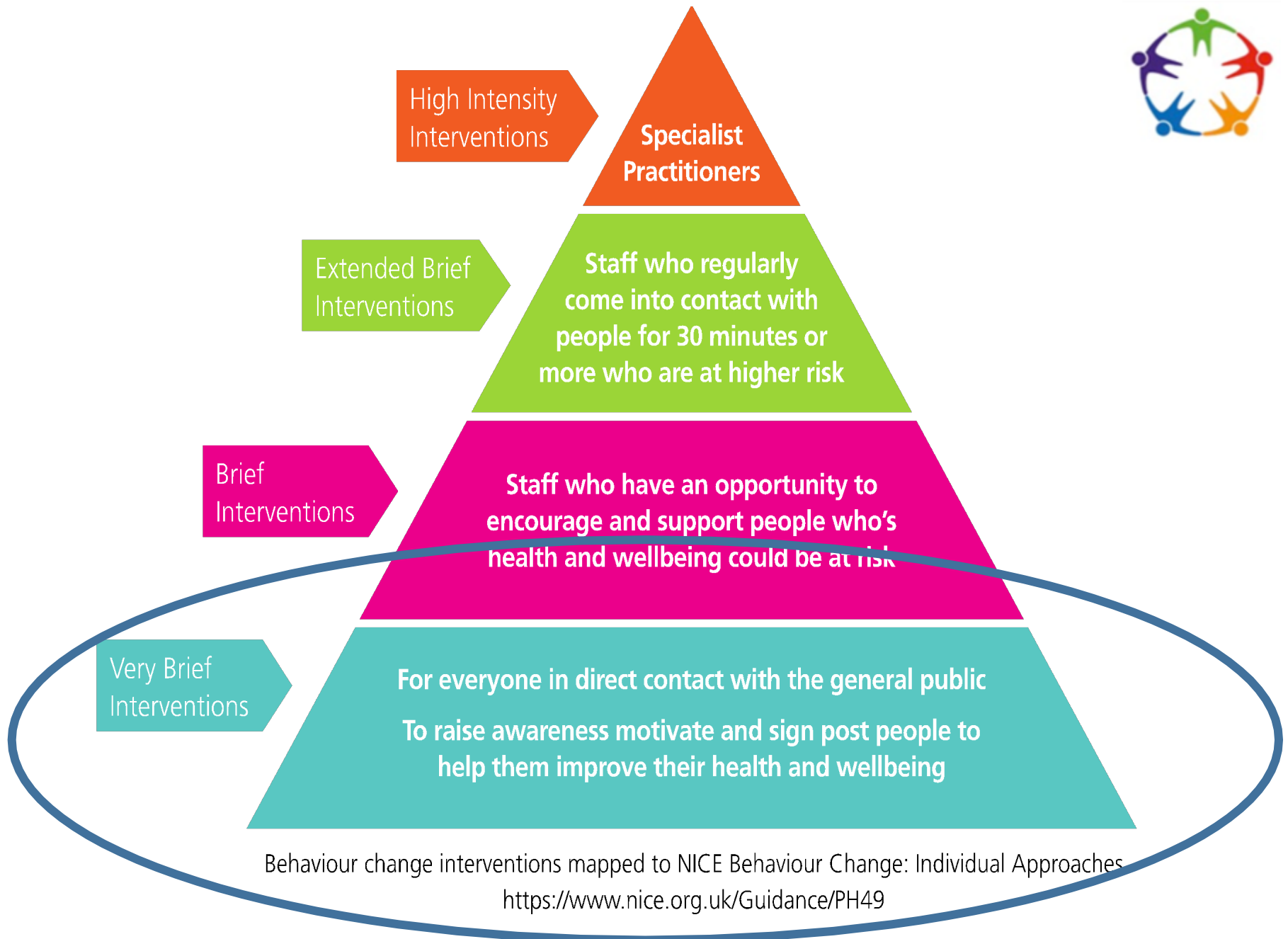


Making Every Contact Count

Graham White

Buckinghamshire Council





Health profile for Buckinghamshire

(Total population 543,128)



Smoking

1 in 10 smoke



Alcohol

3 in 10 drink over 14 units of alcohol a week



Physical Activity



Almost 4 in 10 adults not doing enough physical activity



Diet



6 in 10 adults overweight or obese



Wider Determinants of health



1

Life expectancy isn't the same across Buckinghamshire.

In some areas, people die up to a decade earlier than they should.



2

If people are less well off, they are more likely to experience poor health outcomes from a young age.



3

The cost-of-living crisis is making this worse



4

You can make a difference wherever you work or interact with other people.



Having a short conversation



Planting seeds of
change



Support them to reflect,
think about benefits,
identify solutions and
make a plan



Ask open questions ,
encourage, positively
reflect and signpost



Put yourself in their shoes –
try to understand their
priorities, be sensitive and
non-judgemental



Picking up on the
clues and cues

Thank you!



“Never doubt that a small group of thoughtful committed citizens can change the world; indeed it’s the only thing that ever has” Margaret Mead





Community Matters

Petition – Dropmore School traffic calming petition

Funding Update – Makyla Devlin, Senior Community Board Manager

Buckinghamshire Council Corporate update – Makyla Devlin, Senior Community Board Manager

Public Questions – received in advance – Chairman Cllr David Anthony.



Littleworth Common Road Safety Issues

- High volume & speeding vehicles
- No safe pedestrian road crossing
- No safe pavements
- Poor parking control
- Poor road signage



No safe pavements



No safe pedestrian road crossing



Poor parking control



Poor road signage

SPEED LIMIT 30MPH
MAX. SPEED 54MPH
AVG. SPEED 38MPH
AVG. OFFENDERS / HOUR 25.5*
ENOUGH IS ENOUGH.
Before it's too late.

*one-way



**KEEP OUR
CHILDREN SAFE!**



Sign the e-Petition



Lack of safe pavements and a dedicated crossing, insufficient signage and speeding motorists means the community is at high-risk of a serious accident involving the children (ages 2-7) of Dropmore Infant School, Burnham Montessori School and the local residents of Littleworth Common, Burnham. We need YOUR help to ensure ACTION.

For more information and to support us: please scan the QR code to the left, or visit the link below, and sign our petition. Thank-you.

<https://bit.ly/3WbcBSE>

**Dropmore Campaign
for Safer Travel**



Corporate Update

Graham White

Interim Community Board Manager





Funding Update

Makyla Devlin

Senior Community Board Manager



**Funding Summary Report
Beeches Community Board
30 September 2023**

This paper provides a summary of the funding applications received, considered or in the pipeline for your information.

The table below details the current budget position for Beeches Community Board.

Community Board Fund 23/24	Spend to date (30/09/2023)	Allocated or potential projects to date (30/09/2023)	Remaining budget as of 30/09/2023
£95,369	£822.00	£8,700	£86,669

Funding applications that have been received by Beeches Community Board and their current status are detailed in the below table.

Funding applications received 2023/2024				
Organisation	Project title and description	Amount of funding requested from the Community Board	Amount of contributory funding	Community Board funding recommendation
The Well @ Lent Rise	The Meeting Place Parasol	£822.00	N/A	£822.00

Potential Schemes subject to internal due diligence				
Organisation	Project title and description	Amount of funding requested from the Community Board	Amount of contributory funding	Community Board funding recommendation
Burnham Parish Council	Burnham Rocks (SG)	£700.00	N/A	
Dorney Playground Management	Timber snake swing	£8,000	TBC	TBC

Highways Schemes				
Organisation	Project title and description	Amount of funding requested from the Community Board	Amount of contributory funding	Community Board funding recommendation
None for 2023/2024				



Community Board Beeches

- The Community Board Manager aspires to link in with the local community groups and locations on a regular basis
- Working towards increased visibility within the Board area.
- Engaging with community groups through their localised events
- Continuing the development of the Community Board Facebook page to increase the reach
- The creation of a Board newsletter will be a focus for Q4
- During 2023 so far, Beeches Community Board has funded 1 small grant projects with 2 in the pipeline.
- 2023/2024 budget is £95,369
- There are 3 action groups, Infrastructure and Highways, Improving Our Environment and Wellbeing. Look at reinvigorating the action groups in order to generate discussion around the Board priorities and generate appropriate projects. Everyone is welcome to attend the action groups. For further details, please contact beechescb@buckinghamshire.gov.uk



Community Board Beeches





Any Other Business?





Date of Next Meeting

The Beeches Community Board next Meeting will be on:
4 February 2024 – 1800hrs via MS Teams

